



Board Meeting

April 18, 2023

- **Construction Updates**
 - Elementary Schools (Mina, CCE, COE and CRE)
 - Bastrop High School
 - Cedar Creek High School
- **Design Updates**
 - Intermediate Schools
 - Middle Schools
 - Elementary Schools
 - CRCA
- **Schedule Updates**





New Elementary- Camino Real





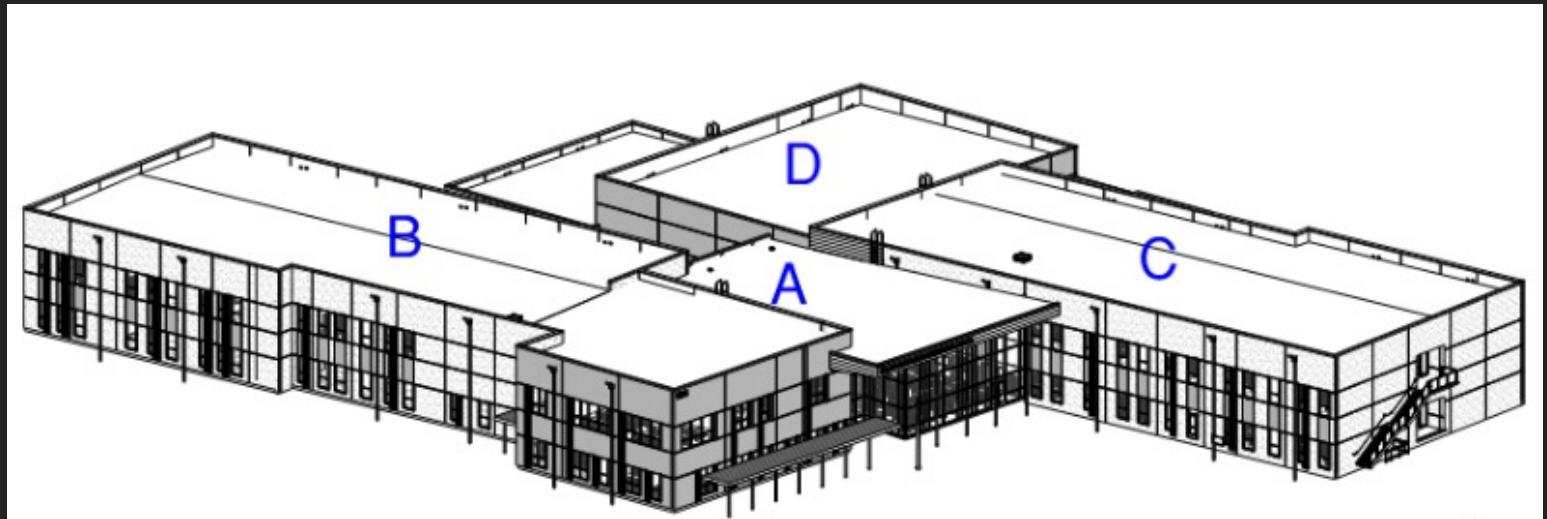


ES2 - Building:

- Area A&B Texture/1st Coat Paint – in progress 2nd floor
- Area A&B Ceramic Tile – in progress
- Area A&B Low-Voltage Cabling – in progress
- Area D Roofing – white cap in progress Area B
- Area C&D sheetrock – in progress
- Area C&D in-wall rough – in progress
- Area C&D Overhead – in progress
- Area D Masonry – in progress at Gym/Cafeteria
- Area C&D Storefront Frames – in progress
- Area A&B Plumbing Fixture Trim-Out – in progress
- Area C&D Tape/Float – in progress
- Area A&B Ceiling Grid 1st Floor – 4/3
- Area A&B Light Fixtures/Diffusers 1st Floor – 4/3
- Area C&D Ceramic Tile – 4/3
- Exterior Tiltwall Stain – 4/10

Site

- Site Utilities – Substantially complete
- OSSF – in progress
- TxDot Roadwork – in progress
- Light Pole Bases – in progress
- Site Paving lime stabilization/flex base – 4/10
- Curbs/Gutter – 4/24





Front Entrance



Reception



Library



Pre K/ Kinder Corridor



Area B 2nd Floor Corridor (B200)



Area B 2nd floor typical 1 thru 5 (4th grade B217)



Area B Restroom (Wash B201)



Plan SE corner looking at kitchen exterior