

# BISD Launch

● **Return to School Guide 2020-2021** ●

**for Parents and Students**

*“Schools are fundamental to child and adolescent development and well-being and provide our children and adolescents with academic instruction, social and emotional skills, safety, reliable nutrition, physical/speech and mental health therapy, and opportunities for physical activity, among other benefits. Beyond supporting the educational development of children and adolescents, schools play a critical role in addressing racial and social inequity.”*

-- American Academy of Pediatrics

# TABLE OF CONTENTS

<b>Introduction</b>	<b>4</b>
Mission	
Commitments	
<b>Health and Safety</b>	<b>5</b>
Transitional Start	
Site Coordinator	
Prevention and Mitigation Practices	
Arrival/Dismissal	
Cafeteria: Breakfast and Lunch	
Classroom	
Cleaning and Disinfecting	
Common Areas and Transitions	
Extracurricular: Athletics	
Extracurricular: Fine Arts	
Face Coverings	
Hand Washing and Sanitizing	
Health Screenings	
Hygiene and Safety Training	
Isolation Protocol	
Parent Meetings	
Recess	
School Closure	
Student Health Services	
Symptoms	
Transportation	
Visitors	
Water	
Return to School Criteria	
For a Symptomatic Student	
For an Asymptomatic Student	
Exposure Through Close Contact	
<b>Instructional Options for Families</b>	<b>13</b>
Option 1: Onsite	
Option 2: Online	
Online Learning Expectations for Students and Parents	
Transitional Start	

Selecting a Learning Option for Your Child  
Timeframe for Selecting a Learning Option

**Curriculum, Instruction and Assessment** **19**

Overview by Grade Band  
District and State Assessments  
Special Education  
Special Education Online Programs

**Student Support Services** **25**

After School Programs  
Child Nutrition  
Counseling Services  
Transportation

**Communication** **26**

**Acknowledgement** **26**

## INTRODUCTION

Conditions surrounding the coronavirus pandemic are ever-changing. Bastrop ISD's return-to-school plans for 2020-2021 are fluid and will be continually evaluated and updated in accordance with local, state, and federal guidelines. The most updated information from Bastrop ISD will be published on our district website. In addition, the District will continue to notify families of any and all major updates that are published.

Bastrop ISD has developed this **Return to School Guide** for 2020-21 to inform parents and students about their choices for the new school year. Regardless of the instructional option parents select for their child, Bastrop ISD is fully prepared and committed to providing a high-quality, rigorous learning environment that focuses on students' safety, as well as their academic, social and emotional well-being.

### Mission

The mission of the Bastrop Independent School District is to ignite passion for lifelong learning and to successfully motivate and prepare all students to compete globally by ensuring they are engaged in diverse, rigorous, and relevant learning experiences that incorporate 21st century skills.

Although the current pandemic creates new and dynamic challenges for our school system, we are committed to focusing on this core purpose with an even greater urgency. The purpose of this document is to communicate our plan for the 2020-21 school year as it relates to **four key areas**:



### Commitments

Bastrop ISD is committed to excellence in our return to school plan. We aim to:

- Adopt protocols that place student and staff safety at the forefront.
- Achieve educational equity and access for all students through opportunities and resources to help students reach their full, individual potential.
- Offer a full range of individualized programming through face-to-face, in-person learning or remote, online learning
- Follow a shared scope and sequence whether learning at school or at home.
- Adhere to District grading guidelines, teacher expectations, and student support systems.
- Hold students accountable to the 90% attendance requirement for earning course credit regardless of a student's chosen learning environment.

# Health & Safety

The health and safety of our staff and students remains our highest priority. While it is not possible to eliminate all risk of furthering the spread of COVID-19, the protocols and steps we have outlined in this document are based on public health and governmental directives, as well as advancing scientific knowledge on the transmissibility of COVID-19. They are intended to increase the likelihood that staff and students can teach and learn in a safe school environment and reduce the likelihood that a coronavirus outbreak occurs on campus. Consistently implementing these protocols is the best way to reduce the potential negative impact of infection on students' educational experiences and on the health and safety of students and staff.

## Transitional Start

Bastrop ISD started the 2020-21 school year August 18. Based upon public health conditions and concerns over the rise in coronavirus cases in our region, Bastrop ISD suspended in-person instruction and delivered only virtual instruction for the first three weeks of school (August 18-September 8). In addition, we reached out to families to ensure they had the technology they needed to be successful.

Beginning September 9, parents had the choice between two learning environments for their child. They could continue with online instruction, or their child could transition to face-to-face instruction by attending school on campus each day. More information about **Instructional Options for Families** can be found in the next section.

Parents were requested to make their decision for onsite instruction or online instruction no later than August 9. However, we continued to be flexible with parents who needed to change their selection after this date. Having a headcount allowed us to prepare our buildings for a safe return for students, to allocate technology, and to create instructional schedules that were balanced.

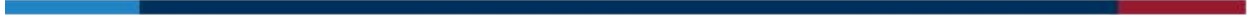
## Extension of Transitional Start

On September 10, the BISD Board of Trustees voted to file a waiver to the Texas Education Agency to extend the transitional start. The waiver provided the District with flexibility to safely bring students back on campus in a measured approach while ensuring that safety protocols are practiced and enforced. The end of the transition period for a phased return was October 9, 2020.

## Site Coordinator

Each campus has a designated person responsible for responding to COVID-19 concerns. The Site Coordinator will be the principal of the school or the principal's designee of another administrator. The campus Site Coordinators will work as a team in conjunction with District officials to ensure a consistent, coordinated response.

Prevention and Mitigation Practices	
Arrival/Dismissal	<b>ARRIVAL</b> <ul style="list-style-type: none"><li>• Parents should avoid early drop-offs in the morning.</li><li>• Parents who are driving their children to school should remain in their vehicles.</li><li>• Parents or older siblings who are walking their children to school will be asked to remain outside.</li></ul>



	<ul style="list-style-type: none"><li>• Alcohol-based hand sanitizer will be available inside the main entrance.</li><li>• Once the building opens, students may report to their homeroom, first-period class or other designated location according to campus procedures.</li><li>• Secondary campuses may consider multiple entrances to receive students to mitigate large gatherings. This may depend on the number of parents who elect onsite learning.</li></ul> <p><b>DISMISSAL</b></p> <ul style="list-style-type: none"><li>• Campuses may designate staggered dismissal groups. Staggering the groups of walkers, car riders, bus riders or grade levels will help manage student movement in the building and decrease the risk of potential crowding outside at dismissal time.</li><li>• Sanitizer stations will be placed at each exit and students will be encouraged to sanitize hands prior to exit.</li><li>• Parents picking up students during the day must call ahead so that students can be sent or accompanied to parent vehicles upon arrival.</li><li>• Early pick-ups will not be permitted one hour before the dismissal time, with the exception of required doctor appointments.</li></ul>
<b>Cafeteria: Breakfast &amp; Lunch</b>	<ul style="list-style-type: none"><li>• Cafeteria capacity will be based on current guidelines. Physical distance will be provided around each occupiable seat.</li><li>• Hand sanitizer stations will be available in the cafeteria.</li><li>• Signage and staff will reinforce physical distance and traffic patterns.</li><li>• Meals may be packaged as individualized “grab and go” meals to ensure ease of pick up and transport to eating locations.</li><li>• Eating in classrooms may be an option if we cannot safely distance children in the cafeteria.</li><li>• Every campus will devise lunch schedules and formats, including outside areas, that allow students to eat safely apart from each other.</li><li>• Reference <b>Child Nutrition</b> in the Student Support Services section of this document for more information.</li></ul>
<b>Classrooms</b>	<ul style="list-style-type: none"><li>• Class size will depend on the number of parents who elect the onsite instructional model for their students during any given grading period.</li><li>• Each classroom will be outfitted with the following:<ul style="list-style-type: none"><li>○ Visual reminders of distancing requirements and best practice;</li><li>○ Hand sanitizer; and</li><li>○ Disinfectant wipes or spray based on product availability.</li></ul></li><li>• Teachers and staff will have access to disinfectant wipes or spray to sanitize high-touch surfaces and shared objects during the instructional day.</li><li>• Teachers will:<ul style="list-style-type: none"><li>○ Require hand hygiene (washing or sanitizing) when entering the classroom and after group activities;</li><li>○ Create physical distance between desks and tables as much as instructionally practical;</li><li>○ Establish appropriate student responsibilities to clean personal areas and materials/supplies, as needed;</li><li>○ Incorporate outdoor teaching when appropriate; and</li><li>○ Limit the use of shared supplies and sanitize any shared supplies.</li></ul></li><li>• Teachers will monitor their students throughout the day and refer to the nurse if COVID-19 symptoms are present.</li><li>• Social distancing in classrooms will become more challenging as additional students come onsite to learn. Space of 3-6 feet is ideal but may not be feasible. To assist with social distancing, classrooms have desk dividers.</li></ul>
<b>Cleaning and Disinfecting</b>	<ul style="list-style-type: none"><li>• The District has obtained cleaning and sanitizing supplies. The Texas Education Agency also has procured supplies for school districts.</li><li>• Custodians will use hospital-grade cleaning agents and a broad spectrum, EPA-registered hard surface disinfectant.</li><li>• Each classroom and restroom will be cleaned daily.</li><li>• All high touch areas will be disinfected daily, including door handles, rails, faucet handles, toilet handles, water fountains, light switches.</li></ul>



	<ul style="list-style-type: none"><li>● Custodial staff will wear face coverings and gloves during work hours.</li><li>● Child nutrition staff will wear face coverings and gloves during meal preparation and service.</li><li>● The cafeteria will be disinfected between lunch periods.</li><li>● Staff will have access to disinfectant wipes to sanitize working surfaces and shared objects after each use and during breaks in instruction.</li><li>● Buses will be disinfected after each morning and afternoon route.</li><li>● Outdoor plastic and metal play equipment will have routine cleaning.</li><li>● Cleaning and disinfecting products will be used and stored correctly away from children. Products used by custodial staff meet EPA disinfection criteria.</li></ul>
<b>Common Areas and Transitions</b>	<ul style="list-style-type: none"><li>● All staff and students will wear a face covering that covers the nose and mouth unless eating, drinking or exercising (athletics, PE, recess).</li><li>● Staggered releases from each class may be organized to limit the number of students in the hallway during transitions. When transitioning between classes, students will travel corridors as far to the right as possible.</li><li>● Visual markers will be developed to help students maintain physical distance and adhere to established campus traffic flow in hallways.</li><li>● Traffic patterns will be established throughout the campus that separate individuals to the greatest extent possible. One-way traffic throughout campus corridors may be established if feasible.</li><li>● Access to hand sanitizer will be provided in common areas.</li></ul>
<b>Extracurricular: Athletics</b>	<ul style="list-style-type: none"><li>● The District will follow guidance of TEA, UIL and our local health authority related to extracurricular/athletic activities.</li><li>● Athletic events will follow participation guidelines set by the UIL.</li><li>● Athletic practices and contests will be conducted following safety protocol including health screening, group size, sharing and sanitizing of equipment, and locker room usage.</li><li>● Hand sanitizing stations will be available in gym facilities, and equipment will be sanitized regularly.</li><li>● If locker rooms can be accessed, all locker room space will be utilized to follow social distancing guidelines.</li><li>● Bus travel will follow the transportation guidelines provided by the District and TEA.</li><li>● Spectator attendance at games and contests may be limited. Ticketing for events may be utilized to control the capacity of facilities.</li><li>● Postgame sign-out procedures for athletes will be communicated to parents prior to the beginning of each season.</li><li>● Event procedures will be in place to minimize face-to-face interactions.</li><li>● Separate entrances and exits may be utilized and event doors may be propped open to minimize physical contact with handles.</li><li>● Spectator seats may be marked and/or configured in a way to enforce social distancing.</li><li>● Concessions and/or concession sales may be limited to encourage social distancing and to follow health and safety guidelines.</li><li>● Booster club meetings should be held virtually to minimize outside exposure to campuses.</li></ul>
<b>Extracurricular: Fine Arts</b>	<ul style="list-style-type: none"><li>● The District will follow guidance of TEA, UIL and our local health authority related to extracurricular/fine arts activities.</li><li>● Large group practice sessions, sectionals, and rehearsals will adhere to social distancing guidelines.</li><li>● Private music lesson teachers will not be allowed to teach onsite until further notice. Private lessons may continue to be conducted virtually if agreed upon between individual families and the lesson teacher.</li><li>● Off-campus fine arts performances will only be conducted if specific guidance is provided by an authorized entity (e.g., District, TEA, UIL).</li><li>● Concerts/performances may be adjusted based on health and safety guidelines including but not limited to transportation procedures, number of attendees, and the manner in which performances are conducted.</li><li>● Booster club meetings should be held virtually to minimize outside exposure to</li></ul>



	<p>campuses.</p>
<b>Face Coverings</b>	<ul style="list-style-type: none"><li>• All staff and students will wear a face covering that covers the nose and mouth unless eating, drinking or exercising (athletics, PE, recess). Cloth face coverings are recommended.</li><li>• All students must wear a face covering when riding the school bus.</li><li>• Parents must send their children to school with a clean face covering each day, either a clean cloth face covering or a new disposable mask.</li><li>• Face shields are not recommended by the CDC as a substitute for cloth face coverings. Students and staff will not be permitted to wear a face shield as a substitute for a cloth face covering or disposable mask.</li></ul>
<b>Hand Washing and Sanitizing</b>	<ul style="list-style-type: none"><li>• Alcohol-based hand sanitizer will be available at the main entrance to the campus, in the cafeteria and in common areas throughout the campus. Classrooms will have hand sanitizer and/or hand soap at sinks for hand washing.</li><li>• Staff will be expected to regularly wash or sanitize their hands.</li><li>• Students will be instructed to use hand soap or hand sanitizer upon entry to the classroom with periodic teacher reminders during the instructional day.</li><li>• Students will be instructed to thoroughly wash hands after recess, before and after eating and restroom breaks.</li></ul>
<b>Health Screenings</b>	<ul style="list-style-type: none"><li>• Staff are expected to self-screen for COVID-19 symptoms each day prior to coming to work, including checking temperature. Staff with COVID-19 symptoms should not report to work, but should contact their health care provider and their supervisor.</li><li>• Parents/guardians are expected to screen their students for COVID-19 symptoms, including temperature check, each day prior to sending their students to school or putting them on a school bus.</li><li>• Parents/guardians of students who are in Online Learning but who are participating in extracurricular activities on campus are expected to screen their students for COVID-19 symptoms, including temperature check, prior to sending their students to campus for practice or competition.</li><li>• Parents' cooperation in not sending children to school who are exhibiting COVID-19 symptoms and in screening their children for COVID-19 symptoms each day before school will be critical to keeping our children and staff safe and healthy.</li><li>• Parents/guardians who are awaiting COVID-19 test results for their children SHOULD NOT send their children to school while awaiting results. Students suspected of having COVID-19 or who are awaiting test results for COVID-19 should remain quarantined at home.</li></ul>
<b>Hygiene and Safety Training</b>	<ul style="list-style-type: none"><li>• Students will receive instruction on the first day and during the first week of on-campus instruction on appropriate hygiene and mitigation strategies, including proper hand washing technique and respiratory etiquette.</li><li>• Student and staff training will be reinforced frequently throughout the school year.</li><li>• Signage will be placed in visible common areas and in classrooms with reminders about health and hygiene protocols and safety measures.</li><li>• Maintenance and custodial staff have been trained in safety awareness and COVID-19 safety protocols and procedures.</li></ul>
<b>Isolation Protocol</b>	<ul style="list-style-type: none"><li>• When a student displays possible symptoms of COVID-19 at school, the school nurse will conduct a clinical assessment to determine if the student needs to be sent home.</li><li>• If a nurse determines a student must go home due to possible COVID-19 symptoms or illness, the student will be isolated in a designated campus location until parent arrival. The student must be picked up within 30 minutes and no later than one hour from the time the campus contacted the parent.</li><li>• If a student becomes ill in a classroom with suspected COVID-19 symptoms, it may be necessary for other students to be removed from the classroom and taken to an alternate location on campus (e.g. go on a walk outside, move to a different room, etc.) so that the classroom can be disinfected.</li><li>• Staff members displaying COVID-19 symptoms will follow district protocols including isolation from students and other staff members.</li></ul>





	<ul style="list-style-type: none"><li>• Students and staff who have tested positive for COVID-19 will be required to meet established “return to school/work” criteria, which may include a statement from a physician. See <b>Return to School Criteria</b> at the end of this section.</li><li>• Parents will be informed if their student is determined to have come into close contact with a student or staff member who has a test-confirmed positive COVID-19 test.</li><li>• Students or staff who come into close contact* with a COVID-19 positive individual will be asked to self-quarantine and may not return to campus during that time. <b>Note: *Close contact is defined by the CDC as being directly exposed to infectious secretions (e.g., being coughed on) or being within 6 feet of an infected person for at least 15 minutes during the infectious period.</b></li><li>• “Infectious period” is defined as two days prior to the onset of symptoms to 10 days after the onset of symptoms. For an asymptomatic person with a test-confirmed positive test, the infectious period is defined as two days prior to the lab test through 10 days after the lab test.</li><li>• The District will notify the local health authority if a person who has been in a school building is test-confirmed to have COVID-19.</li><li>• The District will notify all teachers, staff, and families of all students in a school if a test-confirmed COVID-19 case is identified among students, teachers, or staff who participate in any on-campus activity.</li></ul>
Parent Meetings	<ul style="list-style-type: none"><li>• ARD meetings, 504 meetings, and parent conferences (including discipline hearings and grievance hearings) will be held virtually.</li><li>• The format for the annual elementary conferences will be determined at a later time.</li><li>• Parents and teachers are encouraged to communicate regularly via email and/or Google Classroom to ensure students have the necessary support to be successful.</li></ul>
Recess (exercise/play)	<ul style="list-style-type: none"><li>• Outdoor transmission of the virus is known to be much lower than indoor transmission. To mitigate the risk of transmission, we will work to cohort students and limit the size of groups at recess at any given time.</li><li>• Although we will teach children to maintain safe distances from each other while on the playground, enforcing physical distancing on the playground may be difficult.</li><li>• Children will wash or sanitize their hands at the beginning and end of recess.</li><li>• Face coverings will not be required during recess.</li><li>• High-touch surfaces on the playground such as railings and handles will be cleaned and disinfected regularly.</li></ul>
School Closure	<ul style="list-style-type: none"><li>• There may be a situation that requires the temporary closure of physical buildings and onsite instruction. The District is prepared to quickly transition into a remote/virtual instruction model for all students in the event our buildings have to close temporarily.</li><li>• Any decisions will be guided by the health information provided to us by state and local agencies.</li></ul>
Student Health Services (nurse)	<ul style="list-style-type: none"><li>• Students must be in compliance regarding immunizations prior to school starting.</li><li>• Teachers and other adults will monitor their students throughout the day and refer to the nurse if COVID-19 symptoms present.</li><li>• The campus nurse will educate teachers on what to look for in students and what types of issues require a referral to the nurse.</li><li>• In the event a campus nurse is out, there will be a substitute nurse or other staff member/substitute trained to address COVID-19 issues and other illnesses.</li></ul>
Symptoms	<ul style="list-style-type: none"><li>• Any person experiencing fever of 100°F or higher or who is feeling ill with COVID-19 symptoms, should not come to school and should contact their health care provider for guidance.</li><li>• Any person who has had close contact with an individual who is test-confirmed to have COVID-19 should remain at home. <b>Note: *Close contact is defined by the CDC as being directly exposed to infectious secretions (e.g., being coughed on) or being within 6 feet of an infected person for at least 15 minutes during the infectious period.</b></li></ul>



	<ul style="list-style-type: none"><li>● “Infectious period” is defined as two days prior to the onset of symptoms to 10 days after the onset of symptoms. For an asymptomatic person with a lab-confirmed positive test, the infectious period is defined as two days prior to the lab test through 10 days after the lab test.</li><li>● In evaluating whether a student or staff member has symptoms consistent with COVID-19, consider whether the person has begun experiencing any of the following in a way that is not normal for them:<ul style="list-style-type: none"><li>○ Feeling feverish or measured temperature of 100°F or higher</li><li>○ Loss of taste or smell</li><li>○ Cough</li><li>○ Difficulty breathing</li><li>○ Shortness of breath</li><li>○ Fatigue</li><li>○ Headache</li><li>○ Chills</li><li>○ Sore throat</li><li>○ Congestion or runny nose</li><li>○ Shaking or exaggerated shivering</li><li>○ Significant muscle pain or ache</li><li>○ Diarrhea</li><li>○ Nausea or vomiting</li></ul></li></ul>
<b>Transportation</b>	<ul style="list-style-type: none"><li>● Parents are required to screen children each day, including temperature check, before allowing them to board the bus. (See <b>Health Screening</b> in this chart.)</li><li>● Students will use hand sanitizer when boarding the bus.</li><li>● Students will have assigned seats using a seating chart.</li><li>● Buses will load from back to front and unload from front to back.</li><li>● All students will be required to wear a face covering that covers the nose and mouth while riding the school bus. The bus driver will also wear a face covering.</li><li>● Windows will be cracked to allow for air circulation on the bus.</li><li>● Buses will be disinfected after the morning route and again after the afternoon route using an approved disinfectant sprayer.</li></ul>
<b>Ventilation</b>	<p>Based upon guidelines from American Society of Heating, Refrigerating and Air Conditioning Engineers (ASHRAE), BISD will take several steps to improve ventilation in buildings where possible.</p> <ul style="list-style-type: none"><li>● Increase ventilation rates.</li><li>● Increase external air intake through HVAC system.</li><li>● Operate exhaust fans continuously for the purpose of increasing air flow to vent and increase circulation.</li><li>● Install higher density filters throughout schools.</li><li>● Install MERV-13 filters in nurse’s office and isolation rooms.</li></ul>
<b>Visitors</b>	<ul style="list-style-type: none"><li>● Until further notice, BISD will limit visitors to campuses to essential visits only, including restricting parents from eating with children in the cafeteria or classroom.</li><li>● At any time a visitor comes to campus, he/she will have their temperature taken using a contactless thermometer. A person with a temperature of 100°F or higher or who answers yes to either of the questions below will not be allowed to remain on campus.<ol style="list-style-type: none"><li>1. Do you have any new or worsening symptoms of COVID-19?</li><li>2. Have you had any known close contact* with a person who is test-confirmed to have COVID-19?</li></ol><p><b>Note: *Close contact is defined by the CDC as being directly exposed to infectious secretions (e.g., being coughed on) or being within 6 feet of an infected person for at least 15 minutes during the infectious period.</b></p></li></ul>

	<p>“Infectious period” is defined as two days prior to the onset of symptoms to 10 days after the onset of symptoms. For an asymptomatic person with a lab-confirmed positive test, the infectious period is defined as two days prior to the lab test through 10 days after the lab test.</p>
Water	<ul style="list-style-type: none"> <li>• The use of water fountains will be restricted.</li> <li>• Students are encouraged to bring a water bottle from home each day.</li> <li>• Although students will not be allowed to drink from the water fountains, they will be allowed to refill the water bottle they have brought from home.</li> </ul>

## Return to School Criteria

The criteria for when a student or staff member may return to school is outlined in three categories: asymptomatic, symptomatic, and exposure.

### ***Asymptomatic***

- A person without symptoms who tested positive for COVID-19 may return to school/work when 10 days have passed since the positive test for COVID-19.

### ***Symptomatic***

- A person who had symptoms of COVID-19 may return to school/work when they have met the following criteria:
  - 24 hours fever-free (without the use of fever-reducing medication); **AND**
  - Symptoms have improved; **AND**
  - 10 days have passed since symptoms first appeared

**OR**

  - A negative PCR

**OR**

  - A doctor’s note indicating an alternate diagnosis has been given

### ***Exposure Through Close Contact (See flowchart below)***

Updated  
12/7/20

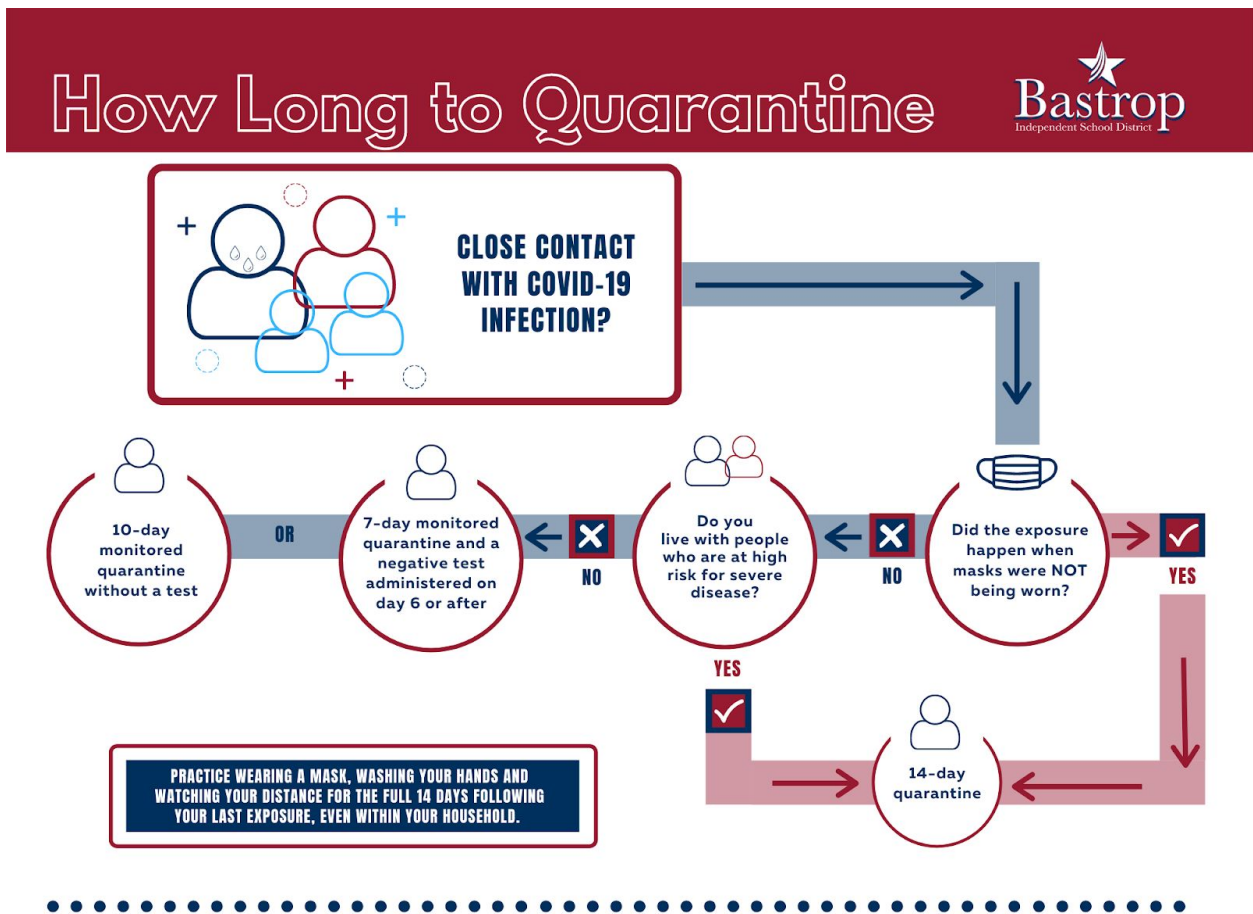
Both the CDC and the TEA revised their guidance regarding quarantine for a person who has been exposed to the virus. A person identified as a close contact\* to someone who is test-confirmed positive for COVID-19 may return to school/work according to the following guidance. In any case, the person should continue to monitor daily for symptoms and take appropriate precautions through day 14.

- **If wearing a mask when exposure occurred,**
  - student/staff quarantine for 7 days from date of exposure and receive a negative test administered no earlier than the 6th day of quarantine **OR**
  - student/staff quarantine for 10 days from date of exposure

- **If not wearing a mask when exposure occurred** or if you live with someone who is at high risk of severe disease,
  - student/staff quarantine for 14 days from date of exposure

\*Close contact is defined by the CDC as being directly exposed to infectious secretions (e.g., being coughed on) or being within 6 feet of an infected person for at least 15 minutes during the infectious period. "Infectious period" is defined as two days prior to the onset of symptoms to 10 days after the onset of symptoms. For an asymptomatic person with a test-confirmed positive test, the infectious period is defined as two days prior to the test through 10 days after the test.

**The flowchart below applies only to those students and staff who are exposed to a positive case of COVID. It does not apply to students and staff who are having COVID symptoms.**



# Instructional Options for Families

For the 2020-21 school year, Bastrop ISD will offer each student the option to attend school 100% of the time on campus for face-to-face, in-person instruction. BISD will offer a second option for 100% online, virtual instruction. Both options are available for children in grades PK through 12.

*“In order to facilitate a safe, effective back-to-school transition process, during a period up to the first four weeks of school, which can be extended by an additional four weeks by vote of the school board, school systems may temporarily limit access to on-campus instruction.” (TEA)*

For the first three weeks of the school year (August 18-September 4), all students participated in virtual instruction. At the end of the three weeks, students either remained in online instruction or were transitioned to onsite instruction based upon their selection on the Back to School Form they completed in Skyward. For weeks 4 and 5, we brought students back in a safe phased approach. From September 9-18, we allowed up to 50% of enrolled students to attend school on campus. For example, a campus with a current enrollment of 800 could have up to 400 students on campus for instruction. With the help of our local health authority, we hope to welcome all students who wish to attend after that safe transition period.

As early as September 21 but not later than September 28, campuses began to increase their onsite enrollment beyond 50% as part of an extended phase-in plan to bring students safely back on campus. Students who were prioritized included those who have been learning via instructional packets, those who are struggling with online learning or are disengaged, students in special education, English learners, and those who are on a waiting list from the previous six weeks. Beginning September 28, all students were learning **Onsite** or **Online**. With some limited exceptions, instructional packets were no longer produced or distributed.

Updated  
12/7/20

In addition, Bastrop ISD received a shipment of internet hot spots in October 2020. Families who would like to check out a hotspot for internet connectivity, should contact their student's home campus for distribution details. Beginning November 9, 100% of students who wished to be onsite were able to safely come back on campus. Parents are able to change their student's learning environment every six weeks according to the Bastrop ISD schedule.

## Option 1: ONSITE

The onsite model will consist of face-to-face instruction that is 100% on campus with safety protocols in place to help protect students and staff. Instruction on campus will happen Monday through Friday following a traditional bell schedule that parents and students are familiar with.

## Option 2: ONLINE

The online model is entirely virtual, requiring students to have a consistent online presence and daily log-in requirements. Virtual instruction will happen Monday through Friday but may not necessarily follow a traditional bell schedule. A loaner device (Chromebook, laptop) is available from the District upon request if a student does not have his/her own device. **Reliable home access to the internet is essential for the delivery of online instruction.**

## Online Learning Expectations

Updated  
12/7/20

Bastrop ISD has developed the following student and parent online learning expectations to ensure the best schooling experience for our students in the digital setting. We appreciate your partnership to ensure a successful spring semester for everyone!

### Student Expectations

- All students are required to log into SeeSaw or Google Classroom on a daily basis, actively participate in their class(es), and keep up with their coursework.
- Virtual students need to make a major commitment and must interact with the content, discussion boards, and assignments **daily**.
  - If a student is unable to login to the approved systems within each 24-hour school day, for any reason, they need to make direct contact with their teacher. Without that contact, the student will be considered absent.
  - Absences for online instruction follow the same policies and procedures as onsite learning, including truancy requirements and make-up work requirements.
- Students will be required to login for live classes at assigned times throughout the day or week as indicated by the campus and teacher schedule.
  - Students can expect to also have multiple self-paced instructional activities assigned throughout the week
- Students receiving interventions (Dyslexia, RtI, etc.) and/or Special Education Services (Speech, Counseling, Occupational Therapy) are required to participate in direct, live instruction and participate in prescribed asynchronous activities.
- Students receiving bilingual instruction will participate in instruction in both English and Spanish.
- All students must keep the computer camera on when requested by the teacher during online lessons, check-ins, and assessments.
- Students will be required to interact with teachers and classmates during live instruction using tools, such as, video and chat features.
- Students should adhere to the code of conduct of their school and behave with integrity and honesty while participating in an online class. It is important for teachers to know what students have learned so that they can best design supports to help students with their learning.
- Students and parents must read and acknowledge the district's Acceptable Use Policy (AUP) regarding technology and the internet.
- Students may be required to physically report to their campus for testing.
- Students must have the means to access the online courses at all times during the school day.
- Students should seek help from their teacher as needed.
- Students should remove distractions during the time they are engaged in learning. (television, music, gaming systems, etc.)

These student expectations are the behaviors necessary to ensure student success. If these expectations are not followed, resulting in the student not demonstrating academic achievement successfully through online instruction, students may be required to return onsite for instruction.

### Parent Expectations

- Ensure that your student has the necessary equipment and internet access to participate in the online courses.
  - You may contact your student's home campus if you are in need of a laptop or hotspot to support internet connectivity.
- Ensure your student has a safe and appropriate place to work and is dressed each day according to the school dress-code.
- Ensure that your student is able to access online courses throughout school day hours according to your

- student's schedule.
- Ensure that your student engages in live instruction throughout the day, according to the student's schedule
  - Students in bilingual classes receive instruction by their teacher in English and Spanish.
- Ensure your student's full engagement (camera on, interacting via microphone or chat feature) in live instruction as requested by the teacher.
- Access your student's grades through Family Access regularly to monitor their completion of coursework. You are able to access student grades at any time.
- Help ensure and verify that your child completes his/her course work and assignments in SeeSaw or Google Classroom.
- Ensure that all coursework and tests are done by your student without the aid of others.
  - Aside from helping at times with procedures/instructions in getting started, the assignment should be completed by the student.
  - Knowing what the student is able to do independently is critical so that teachers can best understand what support your child needs.
- Encourage your student to seek help when they are struggling or feeling frustrated.
- Communicate academic concerns with online teachers as needed by emailing or calling the teacher.
  - If you would like to schedule a conference with your student's teacher(s), you may contact their home campus.
  - Please do not engage with the teacher during live instruction time, as this may take away instructional time from other students.

## Selecting a Learning Option for Your Child

We believe that the face-to-face, in-person instructional setting of a classroom and the relationship and interactions with teachers and peers provide the best environment for the vast majority of students; therefore, we encourage parents to send their children to school. However, we understand that some parents may prefer for their students to learn virtually from home. To assist parents in making the decision between the ONSITE and ONLINE learning models, we have created the comparison chart below to show similarities and differences.

Note: Parents who choose the online option are not limited to the first three weeks of the school year. High-quality virtual instruction by certified teachers from Bastrop ISD who use rigorous, top-notch curriculum and resources will be available for the entire 2020-21 school year should a family elect to keep their children in a virtual learning environment.

<b>Learning Options At-A-Glance</b>		
	<b>ONSITE</b>	<b>ONLINE</b>
<b>Assessment</b>	Students will take curriculum-based, District, and State assessments according to BISD's assessment calendar.	Students will take curriculum-based, District, and State assessments according to BISD's assessment calendar.
<b>Attendance</b>	<ul style="list-style-type: none"> <li>● TEA attendance policies will be followed for all students.</li> <li>● Students must abide by the 90% attendance/completion for credit.</li> <li>● Attendance will be taken daily during each campus' official attendance time.</li> </ul>	<ul style="list-style-type: none"> <li>● TEA attendance policies will be followed for all students.</li> <li>● Students must abide by the 90% attendance/completion for credit.</li> <li>● Online students will meet attendance through daily:               <ul style="list-style-type: none"> <li>● Participation in Google Classroom/Seesaw and computer-based programs,</li> </ul> </li> </ul>



		<ul style="list-style-type: none"> <li>• Live student/teacher interactions, and</li> <li>• Submitting assignments through Google Classroom/Seesaw.</li> </ul>
<b>Curriculum</b>	Teachers will provide instruction according to the Texas state standards in the order and pace designed in the BISD curriculum plan.	Teachers will provide instruction according to the Texas state standards in the order and pace designed in the BISD curriculum plan.
<b>Grading</b>	Grades will be assigned according to District grading guidelines.	Grades will be assigned according to District grading guidelines.
<b>Student Schedules</b>	<p>Students will receive a daily schedule with 450 instructional minutes.</p> <p>Elementary - 7:30-3:00 pm          Intermediate - 8:30-4:00 pm          Middle School - 8:30-4:00 pm          High School - 8:40-4:10 pm</p> <p><b>Onsite Schedules</b>  <a href="#">K, 1st, 2nd, 3rd &amp; 4th</a>  <a href="#">5th &amp; 6th</a>  <a href="#">7th &amp; 8th</a></p>	<p>Students will receive instruction through the following methods:</p> <ul style="list-style-type: none"> <li>• Daily live student/teacher interaction and engagement via live streaming and/or video conferencing</li> <li>• Online activities and programming via Google Classroom or Seesaw</li> <li>• Computer-based instructional programs</li> </ul> <p>The number of instructional minutes is comparable to onsite instruction to ensure that students stay on-track in grade level curriculum.</p> <p>Therefore, online students will have the same instructional day as onsite students:</p> <p>Elementary - 7:30-3:00 pm          Intermediate - 8:30-4:00 pm          Middle School - 8:30-4:00 pm          High School - 8:40-4:10 pm</p> <p>Online students will receive a combination of asynchronous (self-paced, independent work) and synchronous (real-time, live, interactive) learning opportunities throughout the day. Campuses will communicate additional scheduling information based on the student's individualized schedule.</p>
<b>Parent Engagement</b>	<ul style="list-style-type: none"> <li>• Parents will ensure their child attends school each day and meets the 90% attendance requirement.</li> <li>• Parents will monitor their child's progress and grades.</li> <li>• Parents will maintain regular communication with teacher(s).</li> </ul>	<ul style="list-style-type: none"> <li>• Parents will ensure their child attends virtual school each day and meets the 90% attendance requirement.</li> <li>• Parents are encouraged to enroll in district-provided training regarding supporting their child in online learning.</li> <li>• Parents should monitor their child's progress and ask for evidence their child is on track with assignments and coursework.</li> <li>• Parents should check the campus homepage for links to teacher lessons and provide assistance on daily activities unless the work is designated by the teacher as "independent" work.</li> <li>• Parents should establish and monitor the daily schedule communicated by the teacher and the campus, including creating a designated learning space at home.</li> <li>• Parents should maintain regular</li> </ul>





		communication with teacher(s) by phone, email, and/or online meetings to create a learning partnership.
<b>Student Engagement</b>	<ul style="list-style-type: none"> <li>Students will attend school each day according to their class schedule and complete assigned classwork and homework to show mastery of the curriculum.</li> <li>Following the BISD Student Code of Conduct and Dress Code during online instruction.</li> <li>Taking responsibility for asking for help, asking questions, and taking advantage of tutorial sessions.</li> </ul>	<ul style="list-style-type: none"> <li>Students will participate in online learning each day (logging into Google Classroom/Seesaw, watching instructional videos, participating in live streaming classes, and/or interacting with teachers according to the student's schedule and teacher expectations).</li> <li>Students will complete assigned classwork and homework to show mastery and submit through Google Classroom or Seesaw.</li> <li>Students will follow the BISD Student Code of Conduct and Dress Code during online instruction.</li> <li>Students will take responsibility for asking for help, asking questions, and taking advantage of tutorial sessions.</li> </ul>
<b>Teacher Engagement</b>	<ul style="list-style-type: none"> <li>Teachers will provide daily instruction, support, academic feedback and progress monitoring to students in-person.</li> <li>Following the BISD Employee Handbook and Dress Code</li> <li>Monitor and Adjust instruction and support based on student need</li> </ul>	<ul style="list-style-type: none"> <li>Teachers will report to their campus each day to facilitate their online classes.</li> <li>Teachers will provide daily recorded or interactive instruction, support and progress monitoring.</li> <li>Teachers will provide academic feedback through Google Classroom, Seesaw or similar platforms.</li> <li>Following the BISD Employee Handbook and Dress Code</li> <li>Monitor and Adjust instruction and support based on student need</li> </ul>

**CONSIDERATIONS FOR DECISION MAKING**

	<b>ONSITE</b>	<b>ONLINE</b>
	<ul style="list-style-type: none"> <li>★ Does your child receive primary instruction (grades PK-2)?</li> <li>★ Does your child benefit from hands-on, in-person interaction to learn new concepts?</li> <li>★ Does your child benefit from frequent support or supervision to complete assignments?</li> <li>★ Does your child need extra support to read on grade level?</li> <li>★ Does your child need additional behavioral supports to stay focused during learning?</li> <li>★ Does your child have a disability or learning challenges that are best addressed via in-person instruction?</li> <li>★ Did your child struggle with online learning during the spring of 2020?</li> <li>★ Is your child starting at a new campus next year (PK, Kinder, 5th, 7th, 9th grade)?</li> <li>★ Did your child experience significant loss of</li> </ul>	<ul style="list-style-type: none"> <li>★ Is your child able to read grade-level material independently?</li> <li>★ Is your child self-motivated and self-disciplined in order to take ownership of learning and stay organized?</li> <li>★ Will your child recognize when to ask for assistance and seek support from their teacher?</li> <li>★ How did your child do with online learning during spring of 2020 (understanding that the 2020-2021 virtual school will be more in-depth, challenging, and time intensive for your student)?</li> <li>★ Do you and/or your child have adequate computer skills to email, submit assignments, and access online learning platforms?</li> <li>★ Does your student have their own device and access to reliable internet service throughout the instructional day?</li> </ul>



	skills after school closures in spring of 2020?	<ul style="list-style-type: none"><li>★ Do you have a designated space for your child to engage in instruction and complete assignments with limited distractions?</li><li>★ Are you able to provide appropriate supervision and support within the home to allow for implementation of student schedules?</li><li>★ Are you able to ensure your child is available during the instructional day for virtual lessons and meetings with their teacher?</li><li>★ Do you have reliable transportation to access the school periodically for specialized classes or assessments?</li></ul>
--	---	---

### Timeframe for Selecting a Learning Option

A student will remain in the selected learning environment until the end of the grading period. So that families with children at multiple schools can make the transition at the same time, we will allow elementary students to make a switch at the end of the 6-week grading period when intermediate, middle and high school students are allowed to switch. A parent who did not select a learning option defaulted to the online model and will have their child automatically assigned to remote classes.

All students, regardless of the learning environment, must be registered for the 2020-21 school year. Students who are not registered will not receive a schedule or be assigned into a classroom. Parents with students new to Bastrop ISD can start the registration process here: [New Student Enrollment](#). Parents with students who already attend Bastrop ISD can update/verify their information here: [Current Student Information Verification](#).

# Curriculum, Instruction & Assessment

Whether ONSITE or ONLINE, Bastrop ISD is prepared to address the needs of all students in the 2020-21 school year. This includes their needs related to grade level achievement, academic supports, social emotional development, and more. **This section focuses on explaining the online school option.** While parents and students gained some experience with this mode of learning during our school closure in the spring, the new version of our virtual school platform as well as our protocols for virtual learning need additional explanation and detail.

## Overview by Grade Band

PK - 6th Grade	
<b>Core Curriculum</b>	<p>Students will receive instruction based on required state standards in the same order and at the same pace as students receiving on-site instruction. Students may receive instruction in the following ways to include, but not limited to:</p> <ul style="list-style-type: none"> <li>● Live interaction with the teacher (whole class, small group and individual sessions)               <ul style="list-style-type: none"> <li>○ PK-4th: up to 3 hours per day of live student interaction with the teacher</li> <li>○ 5th-6th: up to 4 hours per day of live student interaction with the teacher</li> <li>○ A schedule with the times of live student/teacher interaction will be sent each week.</li> </ul> </li> <li>● Teacher-created instructional videos and additional resources</li> <li>● Authentic student work/assignments submitted through Google Classroom/Seesaw with timely and relevant feedback for continued progress in learning of the standard;</li> <li>● Work in computer-based instructional programs for a specified amount of time</li> <li>● Work in other digital platforms such as Eduphoria, Seesaw, FlipGrid, Google Forms, or Summit K-12</li> <li>● Students will take curriculum-based assessments, District assessments, and state assessments according to BISD's assessment calendar, including STAAR, TELPAS, TEJAS LEE, TPRI, and CIRCLE.</li> </ul>
<b>Bilingual</b>	Students receiving Bilingual education services will continue to receive bilingual instruction following the district's language framework for grades Pre Kindergarten through Fourth grade.
<b>ESL</b>	Students receiving ESL services will continue to receive services through sheltered instruction.
<b>Dyslexia Services</b>	Students will receive Dyslexia instruction through recorded and interactive lessons, individualized assignments and independent practice on the Mindplay Literacy program. The combination of these services will amount to at least 45 minutes, 4 days per week of dyslexia intervention.
<b>Gifted/Talented</b>	Gifted and talented lessons will be provided through Google Classroom or Seesaw on a biweekly basis in alignment with onsite GT programming. Students will have the opportunity to engage in live sessions with the GT teacher and sometimes peers at least once every other week.
<b>Special Education</b>	Students will receive services as described in their Individualized Education Plan to the maximum extent possible. See Special Education section in this document for additional details.
<b>Specials</b>	The district will provide lessons for music, art, computer, and PE. Students will be allowed to participate in live performances.
<b>UIL Activities</b>	Students who selected the online learning option will be able to participate in extracurricular activities in accordance with UIL rules and District guidelines.

## 7th - 8th Grade

<b>Core Curriculum</b>	<p>Students will receive instruction based on required state standards in the same order and at the same pace as students receiving on-site instruction. Students may receive instruction in the following ways to include, but not limited to:</p> <ul style="list-style-type: none"> <li>● Up to 4 hours of daily, live interaction with the teacher (whole class, small group and individual sessions). A schedule with the exact times of live student/teacher interaction will be sent by the campus.</li> <li>● Live streaming, or teacher-created instructional videos and additional resources</li> <li>● Authentic student work/assignments submitted through Google Classroom with timely and relevant feedback for continued progress in learning of the standard</li> <li>● Hands-on activities which may need an extra pair of at “home” hands</li> <li>● Work in computer-based instructional programs for a specified amount of time</li> <li>● Work in other digital platforms such as Edgenuity, Seesaw, FlipGrid, and/or Google Forms</li> <li>● Students will take curriculum-based assessments, District assessments, and state assessments according to BISD’s assessment calendar, including STAAR, TELPAS, Credit by Exam, and Advanced Placement.</li> </ul>
<b>CTE</b>	<p>Career and Technical Education (CTE) courses may require some on-site attendance for labs and skill assessment.</p>
<b>ESL</b>	<p>Students receiving ESL services will continue to receive services through sheltered instruction.</p>
<b>Pre-AP/AP</b>	<p>Pre-AP/AP courses will be offered. The learning platform is decided on a course-by-course basis.</p>
<b>Dyslexia Services</b>	<p>Students will receive dyslexia instruction through recorded and interactive lessons, individualized assignments and independent practice on the Mindplay Literacy program. The combination of these services will amount to at least 45 minutes, 4 days per week of dyslexia intervention.</p>
<b>Special Education</b>	<p>Students will receive services as described in their Individualized Education Plan to the maximum extent possible. See Special Education section in this document for additional details.</p>
<b>Special Areas: Fine Arts, Technology, PE</b>  <div style="border: 1px solid black; background-color: #FFD700; padding: 2px; display: inline-block;"> <b>Updated 12/7/20</b> </div>	<p>The district will provide online lessons for Art, Music, Technology Applications, and PE. For the spring semester, the following courses will not be offered online: Athletics, Dance/Ballet Folklorico, Theater Arts, Theater Tech, PALS, Yearbook, Office Aid. Students will be allowed to participate in practice/rehearsals before or after school and participate in live performances for all fine arts and athletics programming.</p>
<b>Extracurricular Activities</b>	<p>Students who selected the online learning option will be able to participate in extracurricular activities in accordance with UIL rules and District guidelines.</p>
<b>Credit-by-Exam (CBE)</b>	<p>Credit-by-exam for acceleration will be available at times outlined by the BISD 2020-2021 CBE calendar. Assessments will be offered online when available. Some assessments may require students to come to the campus to test in person.</p>

## 9th - 12th Grade

<p><b>Core Curriculum &amp; LOTE</b></p> <div style="border: 1px solid black; background-color: #FFD700; padding: 2px; width: fit-content; margin: 10px auto;"> <p style="margin: 0;">Updated 12/7/20</p> </div>	<p>Students will receive instruction for their core curriculum primarily through Google Classroom.</p> <ul style="list-style-type: none"> <li>● Regular grading policies apply.</li> <li>● Students are required to engage in the learning platform and complete assignments on a daily basis.</li> <li>● Students will take curriculum-based assessments, District assessments, and state assessments according to BISD's assessment calendar, including STAAR and TELPAS.</li> <li>● Courses from Google Classroom will count towards a student's GPA.</li> <li>● Live streaming, or teacher-created instructional videos and additional resources at least 3 times a week</li> <li>● Authentic student work/assignments submitted through Google Classroom with timely and relevant feedback for continued progress in learning of the standard</li> <li>● Work in computer-based instructional programs for a specified amount of time</li> <li>● Work in other digital platforms such as Edgenuity, FlipGrid, and/or Google Forms</li> <li>● Students will take curriculum-based assessments, District assessments, and state assessments according to BISD's assessment calendar, including STAAR, TELPAS, Credit by Exam, and Advanced Placement.</li> </ul> <p>Google Classroom Platform</p> <ul style="list-style-type: none"> <li>● Will be facilitated by a teacher.</li> <li>● Will have required live student/teacher interaction up to 4 hours a week.</li> <li>● Tutorials and/or office hours will be available on any day that live student/teacher interaction is not scheduled.</li> </ul> <p>Edgenuity Platform (as needed)</p> <ul style="list-style-type: none"> <li>● Scheduled tutorials and interventions will be established.</li> <li>● A teacher will be assigned to provide support and progress monitor each core subject.</li> <li>● Teachers will establish mandatory, live student/teacher interactive touch points based on district guidance.</li> </ul>
<p><b>CTE</b></p>	<p>Career and Technical Education (CTE) courses may require some on-site attendance for labs and skill assessment.</p>
<p><b>Dual Credit</b></p>	<p>BISD will adhere to Austin Community College (ACC) Dual Credit platform for learning for 2020-2021.</p>
<p><b>ESL</b></p>	<p>Students receiving ESL services will continue to receive services through sheltered instruction.</p>
<p><b>Pre-AP/AP</b></p>	<p>Pre-AP/AP courses will be offered. The learning platform is decided on a course-by-course basis.</p>
<p><b>Dyslexia Services</b></p>	<p>Students will receive dyslexia instruction through recorded and interactive lessons, individualized assignments and independent practice on the Mindplay Literacy program. The combination of these services will amount to at least 45 minutes, 4 days per week of dyslexia intervention.</p>
<p><b>Special Education</b></p>	<p>Students will receive services as described in their Individualized Education Plan to the maximum extent possible. See Special Education section in this document for additional details.</p>
<p><b>Fine Arts, PE</b></p> <div style="border: 1px solid black; background-color: #FFD700; padding: 2px; width: fit-content; margin: 10px auto;"> <p style="margin: 0;">Updated 12/7/20</p> </div>	<p>The district will provide lessons for Art, Dance, Music, Theater, and PE. Students will be allowed to participate in practice/rehearsals before or after school and participate in live performances for all fine arts and athletics programming.</p>
<p><b>Extracurricular Activities</b></p>	<p>Students who selected the online learning option will be able to participate in extracurricular</p>

	activities in accordance with UIL rules and District guidelines.
<b>Genesis High School</b>	Genesis will continue to receive students for the 2020-2021 school year based on established criteria.
<b>Credit-by-Exam</b>	Credit-by-exam for acceleration will be available at times outlined by the BISD 2020-2021 CBE calendar. Assessments will be offered online when available. Some assessments may require students to come in and test in person.

## District and State Assessments

All students, whether they select onsite or online learning, will take curriculum-based, District, and State assessments according to BISD's assessment calendar.

## Special Education

Students eligible for Special Education Services will be provided a Free, Appropriate, Public Education according to each student's individualized education plan (IEP). To the extent possible, IEP services will be provided through both in-person and virtual learning options.

### In-person Services

- Special Education Staff will provide the instructional and related services included in the student's IEP within the school building or in designated outdoor spaces.
- Campus Administrators will work with Special Education staff to ensure schedules are created to ensure IEP services are provided, while minimizing the number of students each staff member serves.
- Shared spaces utilized for Special Education services will include barriers and strategically spaced student and staff seating as necessary to align with social distancing guidelines.
- Speech and Related Service providers will create schedules in collaboration with campus administration to ensure students remain with peers in their assigned classrooms as often as possible.
- To the extent possible, Speech and Related Services staff will be assigned to campuses across the district to minimize the number of campuses, students and teachers that are served by a single provider.
- Speech Therapists, Dyslexia Teachers, Sign Language Interpreters and Deaf and Hard of Hearing Teachers will be provided with clear masks and face shields to utilize during instruction and therapy sessions.
- Students and General Education Teachers participating in the Regional Day School Program for the Deaf will be provided clear face masks and face shields to use during instruction.
- Individual materials will be provided to each student whenever possible to minimize student contact with shared materials.
- Student IEPs will be developed and revised as necessary through IEP Amendment or an ARD Committee Meeting.

### Virtual Services

- Special Education Teachers will collaborate with General Education Teachers to ensure instruction and assignments are appropriately accommodated and/or individualized for each student.
- Special Education Teachers will provide individualized instruction as indicated in student IEP's in accordance with BISD's Online Learning Plan.

- Speech and Related Service Providers will implement IEP services via teletherapy, parent consultation, and individualized therapy plans provided to students.
- Certain service providers require verbal and/or written consent to provide teletherapy services.
- Special Education Providers will regularly monitor and document student participation and progress in virtual instruction and therapy.
- Special Education Teachers and Providers will provide additional strategies, supports, and instructional opportunities to students who are not making adequate progress.
- When additional supports are not sufficient in meeting student needs, teachers and providers should request an ARD committee meeting.
- Student IEPs will be developed and revised as necessary through IEP Amendment or an ARD Committee Meeting to address student needs associated with virtual instruction.

### **Specialized Safety and Health Considerations**

- Students with disabilities will be provided visual supports, specialized instruction, and additional supervision as necessary to promote health and safety guidelines established by BISD, including hand washing, social distancing, moving safely from class to class, and eating and playing safely.
- In certain environments, additional Personal Protective Equipment such as gloves or air purifiers will be provided as necessary.

### **Bastrop Works Transition Program**

- The Bastrop Works Transition Program will follow all District guidelines for onsite and online instruction.
- The Bastrop Works Transition Program will follow all District Health and Safety guidelines.
- Students attending virtually will receive the services in their IEP to the extent possible given the nature of the program and community based components.
- Student IEPs may be revised by an IEP Amendment or ARD Committee meeting as necessary.
- Community-based services will include the following health and safety precautions:
  - Vehicles will include plastic shields between seating areas when possible.
  - Community outings in vehicles will be limited to a group size that can reasonably adhere to health and safety guidelines.
  - Students and staff will be required to wear masks and/or face shields for the entire duration of a community outing.
  - Community outings will be limited to those absolutely necessary for the implementation of a student's IEP.
  - Meals will be prepared in accordance with District guidelines.

## Special Education Programs Online

The Department of Special Programs and Services is working to develop a robust, daily online instructional program. While each student's instructional program will be individualized to meet their unique needs, the following chart includes a summary of the instructional services being designed categorized by instructional program.

<b>Co-Teaching/Inclusion</b> <ul style="list-style-type: none"><li>★ Co-Taught Live Lessons with General Education Teacher</li><li>★ Individualized Assignments and Activities</li><li>★ Small Group Live Lessons</li><li>★ Office Hours with SPED Teacher</li><li>★ 1:1 and Small Group Support</li><li>★ Regular contact with SPED Teacher to organize and prioritize time and assignments</li></ul>	<b>Resource Reading and Math</b> <ul style="list-style-type: none"><li>★ Lessons provided by SPED Teacher (live, recorded, and individual check-ins)</li><li>★ Monitored time on Special Education computerized programs</li><li>★ Office Hours with SPED Teacher</li><li>★ 1:1 and Small Group Support</li><li>★ Assistance with prioritizing and completing assignments</li></ul>
<b>Life Skills</b> <ul style="list-style-type: none"><li>★ Daily Live and/or Recorded Lessons</li><li>★ Unique Learning Online Program developed and monitored by Life Skills Teacher</li><li>★ Visual Supports provided to the home</li><li>★ Learning kits with manipulatives, materials, and paper-based instructional supports</li><li>★ Individualized Vizzle program monitored by Life Skills Teacher</li><li>★ 1:1 and Small Group Support</li><li>★ Regular family and student support from Life Skills Teacher</li></ul>	<b>Regional Day School Program for the Deaf</b> <ul style="list-style-type: none"><li>★ Co-Taught Live Lessons with General Education Teacher</li><li>★ Live Lessons provided by Deaf and Hard of Hearing (DHH) Teacher</li><li>★ Recorded Lessons with Interpreters</li><li>★ Interpreting Services during Live Lessons</li><li>★ Closed Captioning</li><li>★ Individualized Lessons and Activities</li><li>★ Daily Hearing Checks with DHH Teacher</li><li>★ Hearing Aid and Device Support</li><li>★ 1:1 and Small Group Support</li><li>★ Office Hours with DHH Teacher</li></ul>
<b>Bastrop Works</b> <ul style="list-style-type: none"><li>★ Daily Live and/or Recorded Lessons</li><li>★ Virtual Community and Work-Based experiences</li><li>★ Visual Supports provided to the home</li><li>★ Daily routines and schedules provided to the home</li><li>★ Learning kits with manipulatives, materials, and paper-based instructional supports</li><li>★ 1:1 and Small Group Support</li><li>★ Regular family and student support from Bastrop Works Teacher</li></ul>	<b>Early Childhood Special Education</b> <ul style="list-style-type: none"><li>★ Daily Live and/or Recorded Lessons</li><li>★ Unique Learning Online Program developed and monitored by Life Skills Teacher</li><li>★ Visual Supports provided to the home</li><li>★ Learning kits with manipulatives, materials, and paper-based instructional supports</li><li>★ Individualized Vizzle program monitored by Life Skills Teacher</li><li>★ 1:1 and Small Group Support</li><li>★ Regular family and student support from Life Skills Teacher</li></ul>



# Student Support Services

## After School Programs

Bastrop ISD is proud to offer three valuable and enriching afterschool programs. The fee-based **STARS** program operates at each of our six elementary schools for students age 4 to 13 who are participating in onsite learning and require after school care. The **ACE** program is available at each elementary, intermediate and middle school campus with in-person programming for students participating in onsite learning and a virtual option for any interested students. Tutorial and family support services will be offered to all students who are part of the ACE program. The **Beyond the Bell (BTB)** program will be available for high school students who need additional in-person support services such as credit recovery, tutorials and test preparation and administration. Onsite programs will follow BISD safety protocols and DFPS regulations.

## Child Nutrition

Bastrop ISD will continue to offer a nutritious breakfast and lunch each day to all of our students, whether they are ONSITE or ONLINE. Our child nutrition partner, SFE, is developing their fall meal plan using the guidelines issued by the Texas Department of Agriculture. We anticipate parents of virtual learners will be able to place an order each day using the NutriSlice mobile app, with which many parents are already familiar. We will have a designated touchless pickup area at each campus with similar safety protocols that were in place during curbside meal service the District offered in the spring and summer.

For the fall semester, Bastrop ISD will provide free breakfast and lunch to all students at all BISD schools whether or not a family qualifies for free- or reduced-price meals. In addition, breakfast and lunch meals will be available via curbside pick-up to students who are attending school virtually at home and to all children in the community up to age 18, whether or not they are enrolled in BISD, and individuals with a disability up to age 21. Students do not have to be present in the vehicle when a parent picks up meals curbside.

## Counseling Services

BISD counselors will work collaboratively with all stakeholders to ensure equity, access and success of all students whether onsite or online counseling is offered to our students. Counselors will focus on student requests, check ins, and follow ups on students they are concerned about. They will also continue to support and incorporate aligned Social Emotional Learning lessons and support teachers with these efforts.

## Transportation

Bastrop ISD covers 433 square miles., We provide bus transportation to more than 6,000 students each day on nearly 100 unique bus routes. We will continue to offer transportation for the 2020-21 school year; however, some capacity limitations may exist. We will institute safety measures to help limit the spread of COVID-19, including:

- Hand sanitizer will be required when students enter the bus.
- The bus driver and all students will be required to wear a cloth face covering.
- Students must remain in their seat facing forward, according to an assigned seat on a seating chart.
- Students entering the bus will load beginning with seats at the back. The bus will unload beginning with seats in the front.
- Bus will be disinfected daily after the morning route and again after the afternoon route.



## COMMUNICATIONS

BISD has created a [Back to School Planning](#) hub on the district website that will be updated regularly. In addition, the District and campuses will use Blackboard to communicate directly with families via phone, email or text; notifications and alerts through the mobile app; district and school websites; newsletters; and social media accounts.

Parents and students who have questions or concerns or who need information related to our return to school plans should contact either their school principal or the Bastrop ISD Communications Office at 512-772-7173.

## ACKNOWLEDGEMENT

Bastrop ISD has worked collaboratively to establish guidelines that provide a safe teaching and learning environment for staff and students. The Back to School Planning Team was formed to develop a comprehensive logistical plan for campus daily operations that utilize effective disease mitigation strategies to promote a healthy and safe school environment.

The Back to School Planning Team was composed of teachers, administrators, students, parents, and other campus/district staff. We appreciate the work of this team and their continued guidance to the District as we monitor and adjust practices. We also value the guidance of the Bastrop County Local Health Authority and our district nurse in formulating best practices.